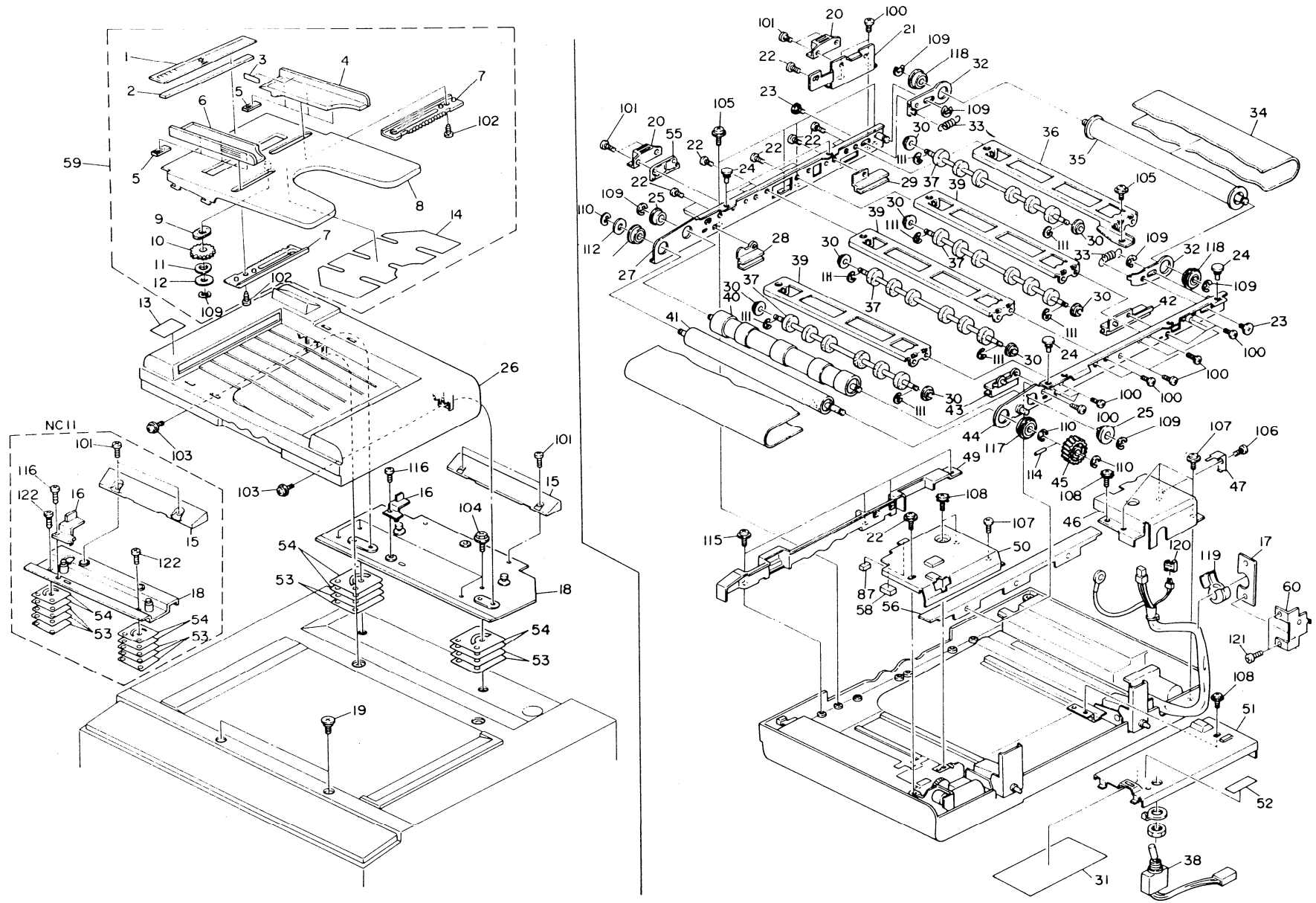


**DF54 (A465)**

# 1. EXTERIOR AND TRANSPORT SECTION (A465)

January 25, '90



# 1. EXTERIOR AND TRANSPORT SECTION (A465)

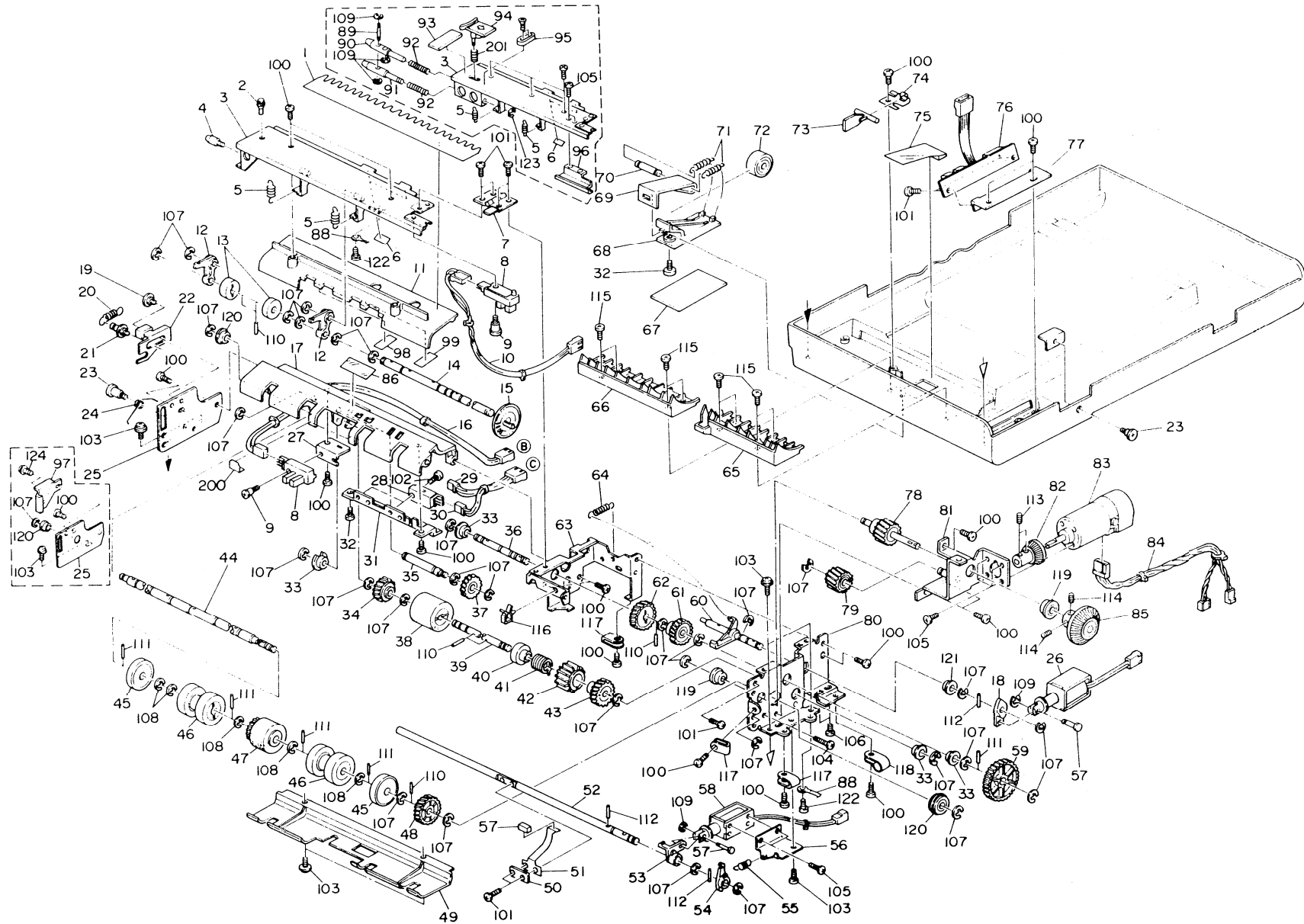
January 25, '90

Index No.	Parts No.	Description	Q'ty Per Assembly
1	A465 1337	Decal - Original Table - LT	1
1	A465 1338	Decal - Original Table - A4	1
2	A422 1335	Magnet - Original Table	1
3	A465 2025	Decal - Original Limit	1
4	A422 1376	Rear Side Guide	1
5	5894 2747	Mylar - Original Guides	6
6	A422 1366	Front Side Guide	1
7	A422 1361	Rack - Side Guide	2
8	A422 1323	Original Table	1
	A422 1320	X/O MB 15	1
9	5443 2712	Cork Pad	1
10	5443 2657	Gear - 28T	1
11	5443 2713	Wave Washer	1
12	5443 2660	Spacer - 6 x 22 x 0.5 mm	1
13	A465 2010	Misfeed Removal Decal - English	1
	A465 2021	Decal - Misfeed Removal - English X/X MB 6	1
13	A465 2050	Misfeed Removal Decal - Multi	1
	A465 2047	Decal Misfeed Removal - Multi-language X/X MB 9	1
14	A422 1385	Original Exit Guide	1
15	A465 1125	Angle Stopper	1
16	A465 1398	Lift Switch Actuator	1
17	A437 1178	DF Harness Bracket	1
18	A465 1191	Mounting Bracket	1
18	A465 1195	Mounting Bracket (NC11) MB 16	1
19	A422 1381	Holder Screw - M4	2
	A422 1380	X/O MB 14	2
20	5936 2480	Magnetic Catch Ass'y	2
21	A422 1135	Magnet Catch Bracket	1
22	5875 2088	Holder Screw - M4	6
23	AA14 3005	Stepped Screw - M4 x 2.5	2
24	A422 1108	Stopper	4
25	A422 1078	Bushing - 6 x 12 x 4mm	2
26	A465 1300	DF Upper Cover	1
27	A465 1100	Front Frame	1

Index No.	Parts No.	Description	Q'ty Per Assembly
28	A422 1185	Belt Guide - Front Left	1
29	A422 1187	Belt Guide - Front Right	1
30	5447 3655	Bushing - 4mm	8
31	A465 2017	Decal - DIP Switch	1
32	A437 1120	Bracket - Belt Tension Spring	2
33	A422 1112	Belt Tension Spring	2
34	A465 1127	Transport Belt	1
	A465 1117	O/O MB 12	1
35	A422 1114	Driven Roller - Transport Belt	1
36	A422 1106	Stay	1
37	A465 1118	Belt Support Roller	4
38	5936 5348	Thin Original Feed Switch	1
39	A422 1107	Stay - Belt Support Roller	3
40	A422 1116	Belt Pressure Roller	1
41	A437 1115	Drive Roller - Transport Belt	1
42	A422 1188	Belt Guide - Rear Right	1
43	A422 1186	Belt Guide - Rear Left	1
44	A422 1103	Rear Frame	1
45	A422 1056	Gear - 19T	1
46	A465 1184	Feed-out Motor Cover	1
47	A437 1190	Grounding Plate	1
49	A465 1331	Grip Cover	1
50	A422 1500	Belt Drive Motor Cover	1
51	A422 1183	Main Board Cover	1
52	5936 7901	Decal - English	1
53	A465 1397	Spacer - 0.5mm	4
54	A465 1389	Spacer - 0.2mm	4
55	A465 1110	Magnet Catch Spacer	1
56	A422 1130	Reflector Plate	1
57	A422 1603	Seal - 2x8x14 4B 1	1
58	A422 1604	Cushion - 8x15x25 4B 7	1
59	A465 0656	Original Table Ass'y - LT 4B 15	1

Index No.	Parts No.	Description	Q'ty Per Assembly
59	A465 0657	Original Table Ass'y - A4	1
		MB 15	
60	A465 1179	OF Bracket	1
		MB 16	
100	0314 0060W	philips Pan Head Screw - M4 x 6	
101	0353 0050W	Tapping Screw - f13 x 5	
102	0413 0082W	Tapping Screw - M3 x 8	
103	0951 4005W	Philips Screw with Flat Washer - M4 x 5	
104	0584 0103W	Hexagon with Flange Screw - M4 x 10	
105	0951 4006W	Philips Screw with Flat Washer - M4 x 6	
106	0951 3006B	Philips Screw with Flat Washer - M3 x 6	
107	0344 0060W	Philips Truss Head Screw - M4 x 6	
108	0801 1185	Philips Truss Head Screw - M4 x 8	
109	0720 0040E	Retaining Ring - M4	
110	0720 0050E	Retaining Ring - M5	
111	0720 0030E	Retaining Ring - M3	
112	0701 00606	Flat Washer - M6	
114	0632 0100G	Pin- 2x10mn	
115	0344 06000	Philips Truss Head Screw - M4 x 6	
116	0313 0050W	Philips Pan Head Screw - M3 x 5	
117	0742 3906	Ball Bearing - 6mm	
118	0741 3806	Ball Bearing - 6 x 13 x 5mm	
119	1106 0222	Cord Clamp	
120	1100 0340	Closed Terminal	
121	0314 0050W	Philips Pan Head Screw - M4 x 5	
		MB 16	
122	0315 0100W	Philips Pan Head Screw - M5 x 10	
		MB 16	

Index No.	Parts No.	Description	Q'ty Per Assembly



## 2, FEED-IN SECTION (A465)

January 25, '90

Index No.	Parts No.	Description	Q'ty Per Assembly
1	A437 1066	Guide Mylar	1
2	A422 1066	Stopper MB 5	1
3	A465 1057	Pull-out Bracket	1
	A422 1057	X/X MB 5	1
4	5413 3903	Pin - Transfer Guide Plate MB 5	1
5	A422 1086	Pull-out Spring	2
6	A422 1063	Seal - 0.7 x 1.3 x 2.0	1
7	A422 1064	Hinge - Pull-out	1
8	5205 5250	LED Sensor Type - S	2
9	A422 1087	Shoulder Screw - M3 x 3	2
10	A422 5202	Harness - Pulse Generator	1
11	A437 1065	Lower Guide Plate	1
12	A422 1071	Pull-out Lever	2
13	A422 1068	Relay Roller	2
14	A422 1067	Relay Roller Shaft	1
15	A422 1080	Pulse Generator	1
	A422 1070	X/O MB 13	1
16	A422 5201	Interface Harness	1
17	A437 1026	Upper Guide Plate	1
18	A422 1040	Feed-in Solenoid Lever	1
19	AA14 3005	Stepped Screw - 114 x 2.5 MB 5	1
20	5446 4577	Spring - Turn Plate MB 5	1
21	A422 1074	Shoulder Screw - M4 x 2.5 MB 5	1
22	A422 1075	Feed-in Unit Release Lever MB 5	1
23	5219 1957	Stepped Screw - M4 MB 5	1
24	A422 1073	Release Spring MB 5	1
25	A422 1072	Front Side Plate	1
26	A422 5252	Solenoid - DC24V (Feed-in)	1
27	A422 1047	Set Sensor Bracket	1
28	A422 5270	Photosensor	2
29	A422 5207	Harness - Registration	1
30	A422 5208	Harness - Paper Size	1
31	A422 1093	Sensor Bracket	1
32	5875 2088	Shoulder Screw - M4	2
33	A422 1078	Bushing -6x12x 41TTn	4

Index No.	Parts No.	Description	Q'ty Per Assembly
34	A422 1051	Gear - 23T	1
35	A422 1044	Idle Shaft	1
36	A422 1503	Idle Shaft	1
37	A422 1042	Gear - 22T	1
38	A422 1046	Pick-up Roller	1
39	A422 1048	Pick-up Shaft	1
40	A422 1002	Clutch Boss	1
41	5918 2163	Clutch Spring	1
42	5918 2164	Clutch Sleeve	1
43	A422 1001	Gear - 24T	1
44	A422 1023	Feed Roller Shaft	1
45	A422 1045	Pull-out Roller	2
46	A422 1090	Side Roller	2
47	A422 1003	Feed Roller	1
48	A422 1041	Gear - 27T	1
49	A422 1025	Original Guide	1
50	A422 1602	Pick-up Lever Plate	1
51	A422 1600	Pick-up Lever	1
52	A422 1601	Pick-up Shaft	1
53	A422 1032	Lever - Pick-up Solenoid	1
54	A422 1031	Lever - Pick-up Spring	1
55	A422 1082	Pick-up Spring	1
56	A422 1033	Pick-up Solenoid Bracket	2
57	5894 2229	Solenoid Pin	2
58	A422 5255	Solenoid - DC24V (Pick-up)	1
59	A422 1505	Gear - 57T	1
60	A422 1005	Clutch Pawl - Pick-up Roller	1
61	A422 1049	Gear - 27T	1
62	A422 1050	Gear - 29T	1
63	A422 1021	Side Plate	1
64	5894 2176	Spring - Detent Arm	1
65	A422 1291	Rear Guide Plate	1
66	A422 1290	Front Guide Plate	1
67	A422 1351	Seal - 0.5 x 37 x 71m	1
68	A422 1352	Friction Belt Holder	1

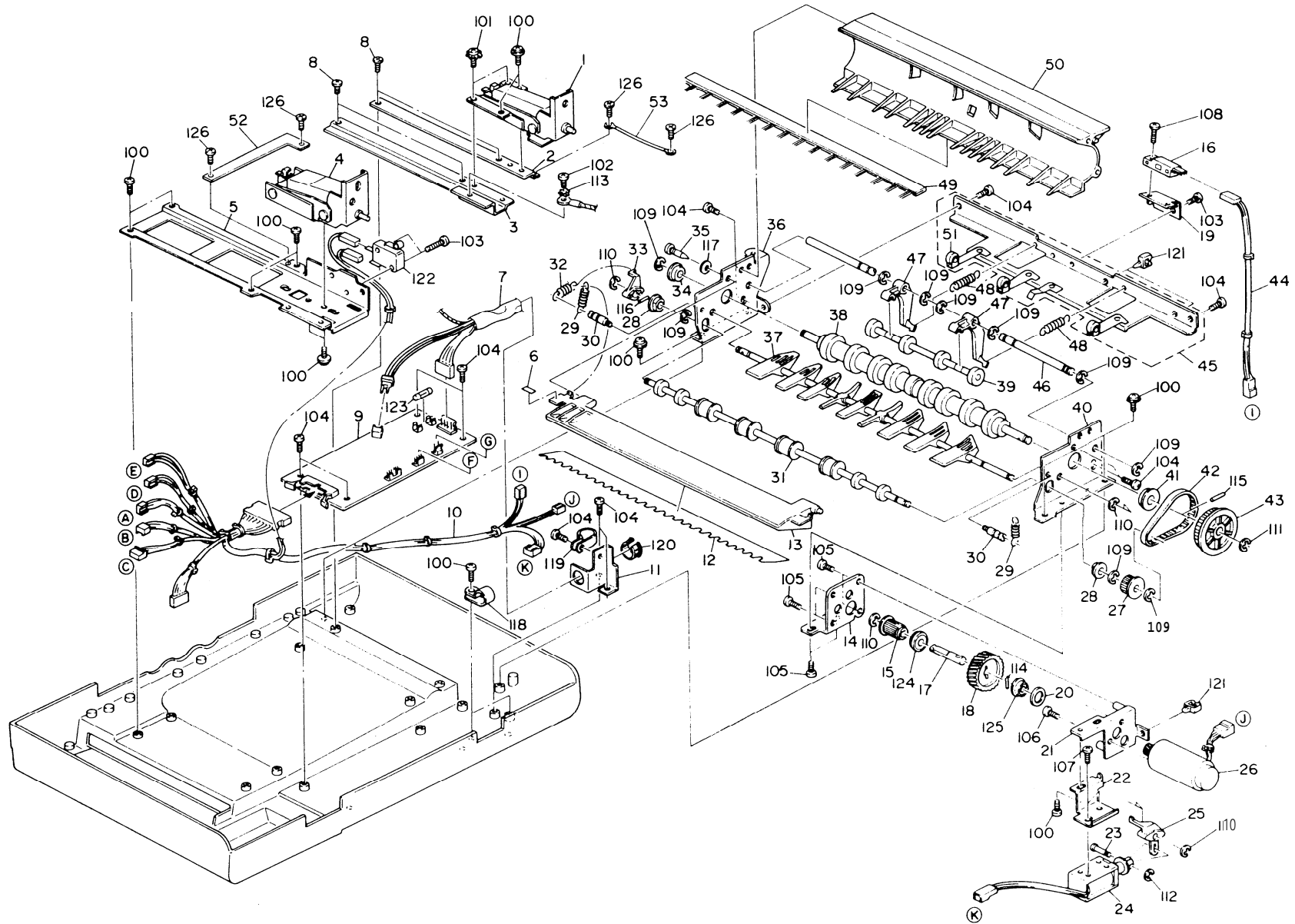
Index No.	Parts No.	Description	Q'ty Per Assembly
69	A422 1354	Friction Belt	1
70	A422 1356	Pin - 3x2.6mm	1
71	A422 1355	Friction Belt Spring	2
72	A422 1069	Friction Roller	1
73	A422 1295	Set Sensor Actuator	1
74	A422 1176	Set Sensor Actuator Bracket	1
75	A422 1390	Entrance Seal	1
76	A465 5260	Indication Board	1
77	A422 1177	Indication Bracket	1
78	A422 1504	Shaft/Gear - 16T	1
79	A422 1506	Gear - 25T	1
80	A422 1510	Rear Side Plate	1
81	A422 1507	Feed-in Motor Bracket	1
82	A422 1501	Gear - 20T	1
83	A422 5300	Feed-in Motor - DC10W	1
84	A422 5204	Feed-in Motor Harness	1
85	A422 1502	Gear - 45T	1
86	A422 1396	Mylar - 0.125 x 14 x 45.5	1
87	A422 1603	Seal - 2 x 8x 14 MB 1	1
88	A422 5212	Grounding Wire MB 4	1
89	A465 1075	Shaft - 3 x 2.5 MB 5	1
90	A465 1074	Pin - 4 x 77.5 MB 5	1
91	A465 1073	Pin - 4 x 76.5 MB 5	1
92	A465 1072	Lock Spring MB 5	2
93	A465 1068	Cushion - 2.5x 14x 43 MB 5	1
94	A465 1077	Release Lever MB 5	1
95	A465 1076	Release Lever Knob	1

Index No.	Parts No.	Description	Q'ty Per Assembly
		NB 5	
96	A465 1069	Harness Cover MB 5	1
97	A465 1080	Fixing Plate - Feed-in Unit MB 5	1
98	A465 1066	Mylar -0.1 x21x58 MB 5	1
99	A465 1067	Mylar -0.1 x 14.5X44 MB 5	1
200	A465 1027	Guide Plate - Paper Feed MB 5	2
201	A465 1070	Lever Spring MB 10	1
100	0314 0060W	Phillips Pan Head Screw - M4 x 6	
101	0313 0060W	Phillips Pan Head Screw - M3 x 6	
102	0951 3010W	Phillips Screw with Flat Washer - M3 x 10	
103	0951 4006W	Phillips Screw with Flat Washer - M4 x 6	
104	0313 0120W	Phillips Pan Head Screw - M3 x 12	
105	0313 0040W	Phillips Pan Head Screw - M3 x 4	
106	0951 3004W	Phillips Screw with Flat Washer - M3 x 4	
107	0720 0040E	Retaining Ring - M4	
108	0720 0060E	Retaining Ring - M6	
109	0720 0025E	Retaining Ring - M2.5	
110	0632 0100G	Pin - 2x10mm	
111	0632 0140G	Parallel Pin - 2 x 14mm	
112	0632 0080G	Parallel Key - 2 x 8mm	
113	0573 0030E	Hexagon Headless Set Screw - M3 x 3	
114	0573 0060E	Hexagon Headless Set Screw - M3 x 6	
115	0354 0060W	Phillips Truss Head Screw - M4 x 6	
116	1105 0199	Clamp	
117	1105 0008	Nylon Clip - 2N	

Index No.	Parts No.	Description	Qty Per Assembly
118	1105 0009	Nylon Clip - 5N	
119	0741 3505	Ball Bearing - 5 x 10 x 4 mm	
120	0741 3506	Ball Bearing - 6x12 x4mm	
121	0805 3383	Bushing - M5	
122	0950 4006W	Phillips Screw With Lock Washer - M4 x 6 MB 4	
123	0720 0030E	Retaining Ring MB 5	
124	0951 4005W	Phillips Screw With Flat Washer - M4 x 5 MB 5	

Index No.	Parts No.	Description	Qty Per Assembly





### 3. INVERT AND EXIT SECTION (A465)

January 25, '90

Index No.	Parts No.	Description	Q'ty Per Assembly
1	A465 1499	Right Hinge	1
2	A422 1121	Right Bracket - Right Hinge	1
3	A422 1120	Left Bracket - Right Hinge	1
4	A465 1394	Left Hinge	1
5	A465 1119	Left Hinge Bracket	1
6	A422 2030	Decal - Invertor Guide Plate	1
7	A465 5205	Interface Harness	1
8	5875 2088	Shoulder Screw - M4	4
9	A465 5170	DF Main Board	1
10	A422 5200	Main Harness	1
11	A422 1175	Harness Bracket	1
12	5918 2623	Paper Guide Mylar	1
13	A422 1225	Invertor Guide Plate	1
14	A422 1260	Front Side Plate	1
15	A409 1192	Pulley - 15T	1
16	A422 5270	Photosensor	1
17	A409 1195	Exit Drive Shaft	1
18	A422 1265	Gear - 46T	1
19	A422 1251	Bracket - Exit Sensor	1
20	A409 1197	Spacer -10X 16x 1.61nn	1
21	A422 1261	Rear Side Plate	1
22	A422 1232	Invertor Solenoid Bracket	1
23	5894 2229	Solenoid Pin	1
24	A422 5255	Solenoid - DC24V (Invertor)	1
25	A422 1235	Rear Lever	1
26	A422 5310	Feed-out Motor - DC10W	1
27	A409 1161	Pulley - 21T	J
28	5053 0447	Bushing - M6	2
29	A422 1226	Spring - Invertor Guide Plate	2
30	A409 1150	Spring Anchor	2
31	A422 1240	Upper Exit Roller	1
32	A422 1231	Invertor Gate Spring	1
33	A422 1234	Front Lever	1
34	A422 1078	Bushing -6x12x 4rTTn	1
35	5446 2824	Screw - Duplex Guide Plate	1

Index No.	Parts No.	Description	Q'ty Per Assembly
36	A422 1275	Front Side Plate - Feed-out	1
37	A422 1230	Invertor Pawls	1
38	A422 1210	Invertor Roller	1
39	A422 1216	Invertor Support Roller	1
40	A422 1276	Rear Side Plate - Feed-out	1
41	A422 1079	Bushing - 8 x 16 x 5 mm	1
42	A422 1270	Timing Belt - 81XL	1
43	A409 1143	Pulley - 50T	1
44	A422 5203	Feed-out Sensor Harness	1
45	A422 1245	Upper Exit Roller Ass'y	1
46	A422 1218	Pressure Lever Shaft	1
47	A422 1217	Pressure Lever	2
48	A422 1219	Pressure Lever Spring	2
49	A422 1257	Antistatic Brush	1
50	A422 1255	Invertor Guide Plate	1
51	A422 1247	Upper Exit Roller	4
52	A465 1126	Grounding Plate M8 4	1
53	A465 5213	Grounding Wire M8 4	1

Index No.	Parts No.	Description	Q'ty Per Assembly
100	0951 4006W	Phillips Screw with Flat Washer - M4 x 6	
101	0801 1185	Phillips Truss Head Screw - M4 x 8	
102	0314 0060M	Phillips Pan Head Screw - M4 x 6	
103	0313 0140W	Phillips Pan Head Screw - M3 x 14	
104	0314 0060W	Phillips Pan Head Screw - M4 x 6	
105	0951 3006W	Phillips Screw with Flat Washer - M3 x 6	
106	0313 0060W	Phillips Pan Head Screw - M3 x 6	
107	0313 0040W	Phillips Pan Head Screw - M3 x 4	
108	0951 3010W	Phillips Screw with Flat Washer - M3 x 10	
109	0720 0040E	Retaining Ring - M4	
110	0720 0030E	Retaining Ring - M3	
111	0720 0060E	Retaining Ring - t+16	
112	0720 0025E	Retaining Ring - M2.5	
113	0704 0040C	Toothed Washer - M4	
114	0632 0100G	Pin - 2x10m	
115	0633 0120G	Parallel Pin - M3 x 12	
116	0632 0080G	Parallel Key - 2 x 8m	
117	0701 00408	Flat Washer - M4	
118	1105 0009	Nylon Clip - 5N	
119	1105 0011	Nylon Clip - 8N	
120	1106 0430	Bushing - 13mm	
121	1105 0199	Clamp	
122	1204 1319	Micro Switch	
123	1107 0413	Fuse - 3A 125V	
124	0742 3905	Ball Bearing - 5 x 13 x 4 mm	
125	0741 3505	Ball Bearing - 5 x 10 x 4 mm	
126	0950 4006W	Phillips Screw With Lock Washer - M4 x 6 MB 4	

Index No.	Parts No.	Description	Q'ty Per Assembly

# 4. MAIN BOARD (A465)

January 25, '90

CONNECTOR		CAPACITOR		SYMBOL NO.		INDEX NO.		SYMBOL NO.		INDEX NO.		SYMBOL NO.		INDEX NO.		SYMBOL NO.		INDEX NO.		SYMBOL NO.		INDEX NO.			
CN101	105	C101	140	C111	152	C121	156	C131	156	c141	156	C151	156	DIP101	113	D101	117	FU101	112	IC101	126				
CN102	103	C102	148	C112	152	C122	156	C132	156	C142	150	C152	155	D102	117					IC102	116				
CN103	106	C103	145	C113	143	C123	156	C133	156	C143	156	C153	156							IC103	4				
CN104	104	C104	147	C114	154	C124	156	C134	156	C144	150	C154	156							IC104	127				
CN105	107	C105	146	C115	154	C125	156	C135	156	c145	156	C155	153							IC105	122				
CN106	3	C106	142	C116	141	C126	156	C136	167	C146	156									IC106	2				
		C107	151	C117	142	C127	156	C137	156	C147	156									IC107	110				
		C108	147	C118	156	C128	156	C138	156	C148	156										120				
		C109	144	C119	156	C129	156	C139	156	C149	156														
		C110	145	c120	156	C130	156	C140	156	C150	156														

RESISTOR ARRAY		JSW		LEO		F		OSC		TRANSISTOR		RESISTOR ARRAY		RESISTOR		RESISTOR		RESISTOR		RESISTOR		RESISTOR			
IC108	129	RAY	135	JSW1	108	LED101	118	NF101	139	OSC101	130	Q101	115	RAY101	135	R101	133	R111	132	R121	165				
IC109	123			JSW2	108	LEO102	118									R102	131	R112	132	R122	157				
IC110	121			JSW3	108	LEO103	118									R103	171	R113	132	R123	162				
IC111	129			JSW4	108	LEO104	118									R104	171	R114	172	R124	162				
IC112	124					LED105	118									R105	171	R115	174	R125	159				
IC113	125					LED106	118									R106	169	R116	170	R126	160				
IC114	129					LED107	118									R107	168	R117	162	R127	160				
IC115	128															R108	173	R118	165	R128	160				
IC116	119															R109	134	R119	162	R129	160				
																R110	134	R120	160	R130	161				

SYMBOL NO.		INDEX NO.		SYMBOL NO.		INDEX NO.		SYMBOL NO.		INDEX NO.		SYMBOL NO.		INDEX NO.		SYMBOL NO.		INDEX NO.		SYMBOL NO.		INDEX NO.			
R131	161	R141	162	R151	162	R161	162	R172	162	R182	159	R192	166	SW101	114	TP101	102	T168	162	VR101	137				
R132	161	R142	162	R152	162	R162	162	R173	162	R183	159	R193	166	SW102	114	TP102	102			VR102	136				
R133	165	R143	163	R153	162	R163	162	R174	162	R184	159	R194	166			TP103	102			VR103	136				
R134	165	R144	166	R154	162	R164	162	R175	162	R185	159	R195	166			TP104	102			VR106	138				
R135	165	R145	162	R155	it2	R165	162	R176	159	R186	159	R196	164			TP105	102								
R136	163	R146	162	R156	162	R166	162	R177	159	R187	162					TP106	102								
R137	165	R147	162	R157	160	R167	162	R178	159	R188	159					TP107	102								
R138	162	R148	162	R158	160	R169	162	R179	159	R189	159														
R139	158	R149	162	R159	163	R170	159	R180	162	R190	162														
R140	162	R150	162	R160	163	R171	162	R181	162	R191	159														

## 4. MAIN BOARD (A465)

January 25, '90

Index No.	Parts No.	Description	Qty Per Assembly
*	A465 5170	OF Main Board	1
1	A422 5350	IC - HCTL-3	1
2	A465 5160	IC - 8 x 16384 250NS	1
3	A465 5210	Fiber Connector - 2P	1
4	5936 5221	Heat Sink	1

Index No.	Parts No.	Description	Qty Per Assembly
101	1005 0843	Heat Sink - OSH2425SP	
102	1101 0328	Connection Pin Contact	
103	1102 0958	Connector - 2P	
104	1102 2966	Connector - HIF3BA - 34PA	
105	1103 0881	Connector - 4P	
106	1103 1726	Connector - 4P	
107	1103 1729	Connector - 7P	
108	1103 1878	Connector - 2P	
110	1104 0271	LSI Socket - 28P	
111	1104 0333	Fuse Holder	
112	1107 0413	Fuse - 3A 125V	
113	1204 0883	DIP Switch	
114	1204 1385	Push Switch	
115	1401 0282	Transistor - 2S620	
116	1401 0329	IC - MP4503	
117	1401 0832	Diode - DSA1A1	
118	1403 0308	LED - TLR-102A	
119	1403 0388	Photocoupler - ON3111	
120	1407 0602	IC - M(3S, IC TC4040BP	
121	1407 0604	IC - TC4049P	
122	1407 1026	IC - SN74LS373N	
123	1407 1334	IC - uPD7810G	
124	1407 1348	IC - TD62304p	
125	1407 1535	IC - TD62308AP	
126	1408 0076	IC - upC14132	
127	1408 0408	IC - PST518A	
128	1408 0521	IC - M51971L	
129	1408 0578	IC - HA17339	
130	1503 0070	Ceramic Oscillator - 10MHz	
131	1600 0239	Resistor - 0.47 1W	
132	1600 0544	Resistor - 1K 1/4W -1%	
133	1600 0576	Resistor - 330 5W	
134	1601 1732	Resistor - 390n 1/4W 5%	
135	1601 7326	Resistor - Array - 10Kn	
136	1601 8145	Variable Resistor - 5Kfi	

Index No.	Parts No.	Description	Q'ty Per Assembly
137	1601 8147	Variable Resistor - 10Kfi 0.5W	
138	1601 8148	Variable Resistor - 20K0	
139	1602 0953	Coil - 800BH 2.5A	
140	1604 1358	Capacitor - 1000uF 10V	
141	1604 1378	Capacitor - 1PF 50V	
142	1604 1379	Capacitor - 2.2MF 50V	
143	1604 1380	Capacitor - 3.3BF 50V	
144	1604 1381	Capacitor - 4.7uF 50V	
145	1604 1382	Capacitor - 10uF 50V	
146	1604 1383	Capacitor - 22uF 50V	
147	1604 1386	Capacitor - 100uF 50V	
148	1604 1390	Capacitor - 1000uF 50V	
150	1604 0141	Capacitor - 4700PF 50V	
151	1606 0658	Capacitor - 0.1BF 50V	
152	1606 1308	Capacitor - 27PF 50V	
153	1606 1326	Capacitor - 100PF 50V f10%	
154	1606 1348	Capacitor - 0.022uF 50v	
155	1606 1451	Capacitor - 0.1DF 50v	
156	1606 1452	Capacitor - 0.01UF 50V	
157	1610 0035	Resistor - 1000 1/8W t5%	
158	1610 0047	Resistor - 330n 1/81 ?5%	
159	1610 0053	Resistor - 1Kn 1/8W f5%	
160	1610 0057	Resistor - 1.5Kn 1/8ki ?5%	
161	1610 0065	Resistor - 3.3Kfi 1/8' A f5%	
162	1610 0067	Resistor - 4.7Kn 1/8U *5%	
163	1610 0071	Resistor - 10Ko 1/8W f5%	
164	1610 0073	Resistor - 12Kn 1/8W 25%	
165	1610 0079	Resistor - 22Kn 1/8W ?5%	
166	1610 0107	Resistor - 1Mn 1/8W *5%	
167	1610 0286	Capacitor - 100PF 50V f5%	
168	1611 4103	Resistor - 10Kn 1/4T t5%	
169	1611 4121	Resistor - 120n 1/4T f5%	
170	1611 4229	Resistor - 2.2n 1/4' A -5X	
171	1611 4272	Resistor - 2.7Kn 1/4T *5%	
172	1611 4393	Resistor - 39Kn 1/4T 25%	

Index No.	Parts No.	Description	Q'ty Per Assembly
173	1611 4472	Resistor - 4.7KG 1/4T f5%	
174	1611 4563	Resistor - 56Kn 1/4T t5%	

LED

SYMBOL NO.	INDEX NO.
LED200	105
LED201	105
LED202	106

CONNECTOR

SYMBOL NO.	INDEX NO.
CN200	101
	103
CN201	102
	104

### 5. Indication Board (A465)

July 30, 88

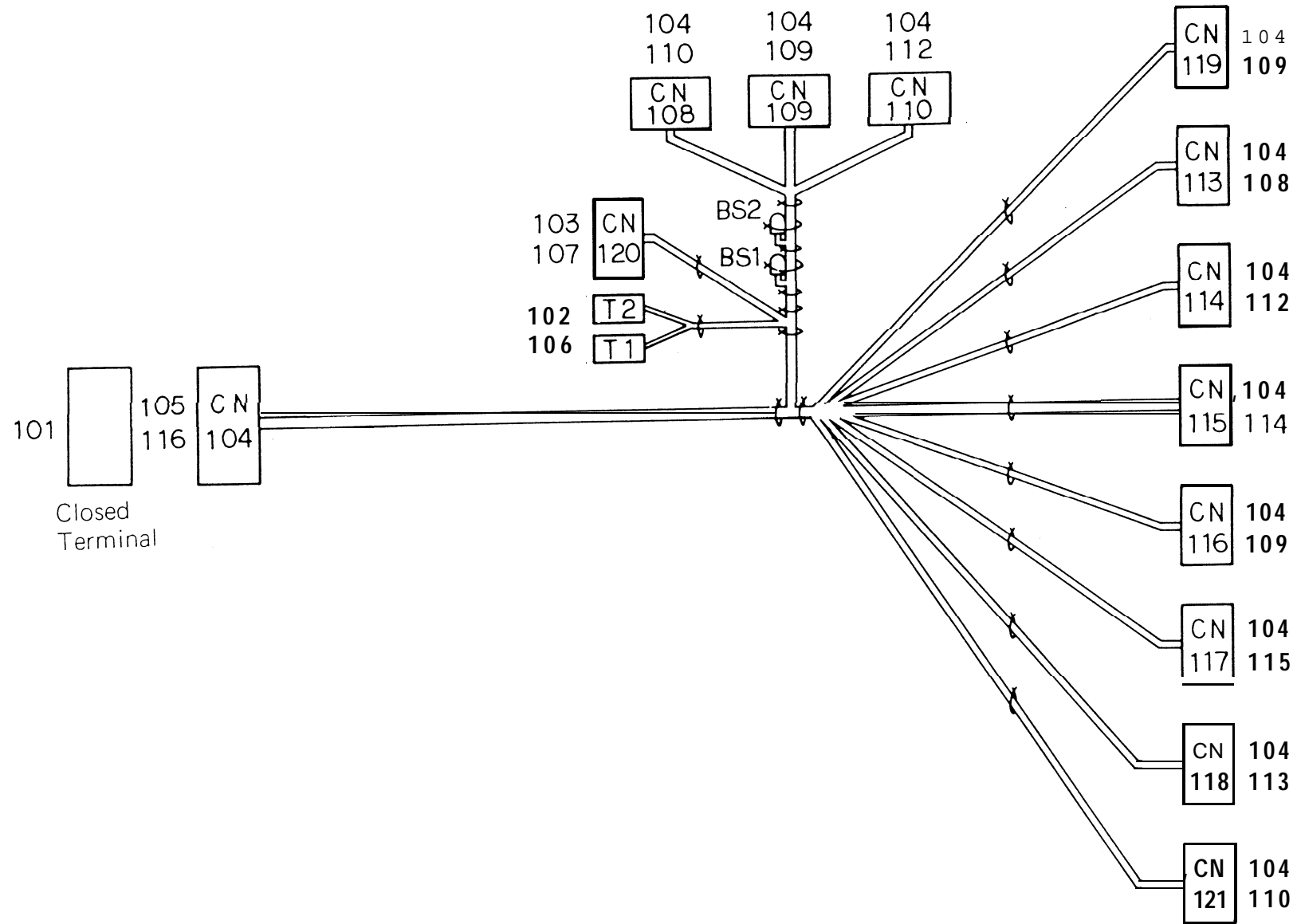
Index No.	Part No.	Description	Q'ty Per Assembly
*	A465 5260	Indication Board	1

Index No.	Part No.	Description	Q'ty Per Assembly
101	1100 1306	Terminal	
102	1100 1328	Contact	
103	1102 1805	Insulating Sleeve	
104	1102 1967	Connector – 6P	
105	1403 0236	LED – MU02 - 520	
106	1403 0237	LED – MU02 - 220	



# 6. MAIN HARNESS (A465)

January 25, '90



## 6. MAIN HARNESS (A465)

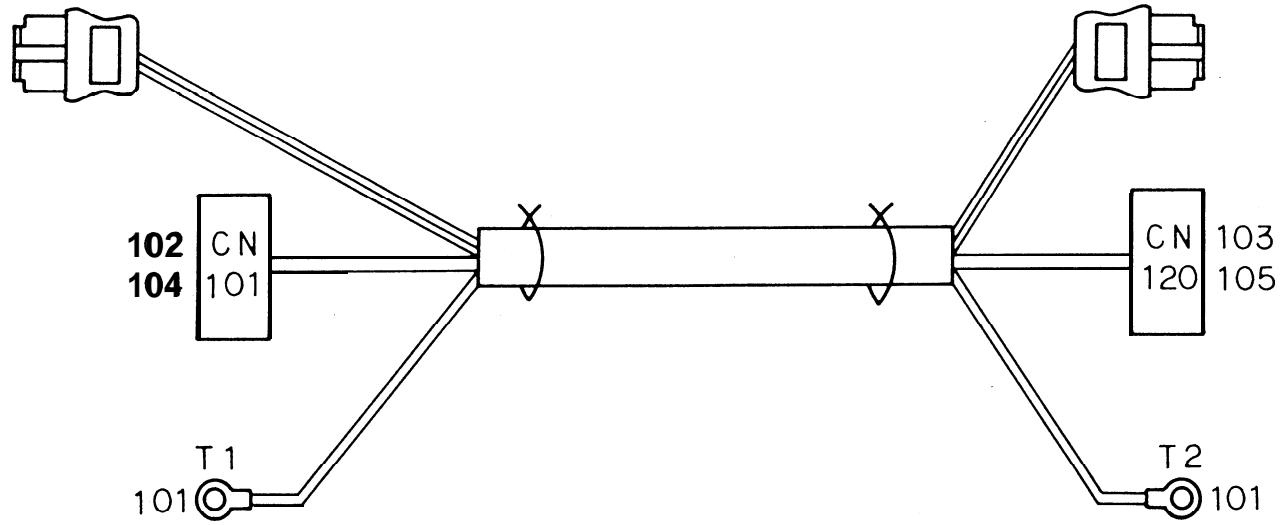
January 25, '90

Index No.	Parts No.	Description	Qty Per Assembly
	A422 5200	Main Harness	1

Index No.	Parts No.	Description	Qty Per Assembly
101	1100 0340	Closed Terminal	
102	1100 1169	Fastening Receptacle	
103	1100 1253	Pin - Mate-N-Lock	
104	1100 1327	Contact	
105	1100 1348	Pin Contact	
106	1102 1408	Receptacle Housing - 1P	
107	1102 1756	Connector - 2P	
108	1102 1910	Connector - 2P	
109	1102 1911	Connector - 3P	
110	1102 1912	Connector - 4P	
111	1102 1914	Connector - 6P	
112	1102 1924	Connector - 2P	
113	1102 1925	Connector - 3P	
114	1102 1938	Connector - 2P	
115	1102 1939	Connector - 3P	
116	1103 0659	Connector - 34P	

# 7. INTERFACE HARNESS (A465)

January 25, '90



## 7. INTERFACE HARNESS (A465)

January 25, '90

Index No.	Parts No.	Description	Q'ty Per Assembly
*	A465 5205	Interface Harness	1

Index No.	Parts No.	Description	Q'ty Per Assembly
101	1100 0051	Connector	
102	1100 1190	Socket - Mate-N-Lock	
103	1100 1447	Socket - Mate-N-Lock	
104	1102 1374	Connector - 5265-4P	
105	1102 1517	Connector - 4P	